

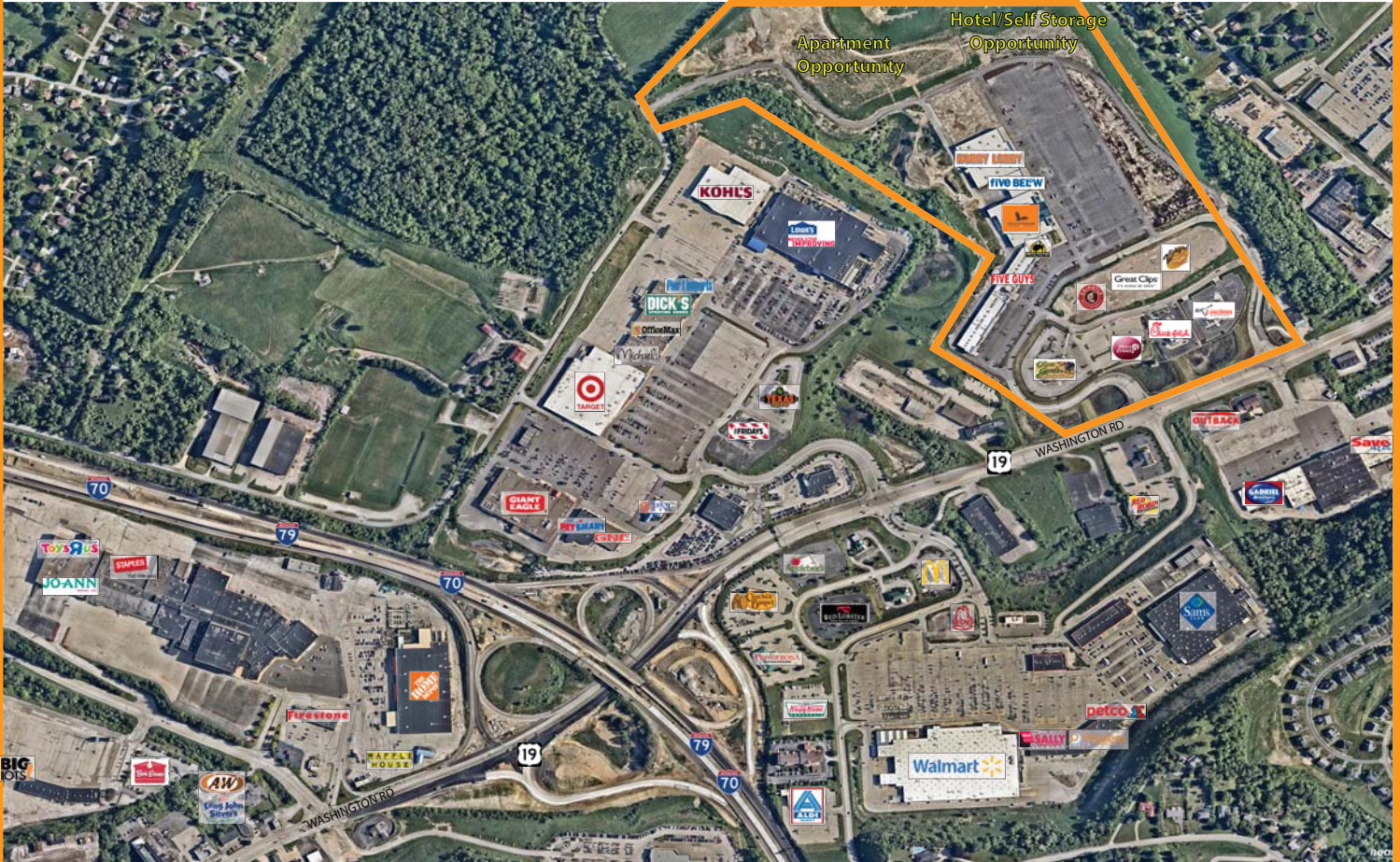
NEW DEVELOPMENT - NOW LEASING



The Old Mill Shopping Center

ALONG WASHINGTON RD NEAR I-70/79 WASHINGTON, PA 15301

SUITES AVAILABLE FROM 3,000 TO 35,000 SF



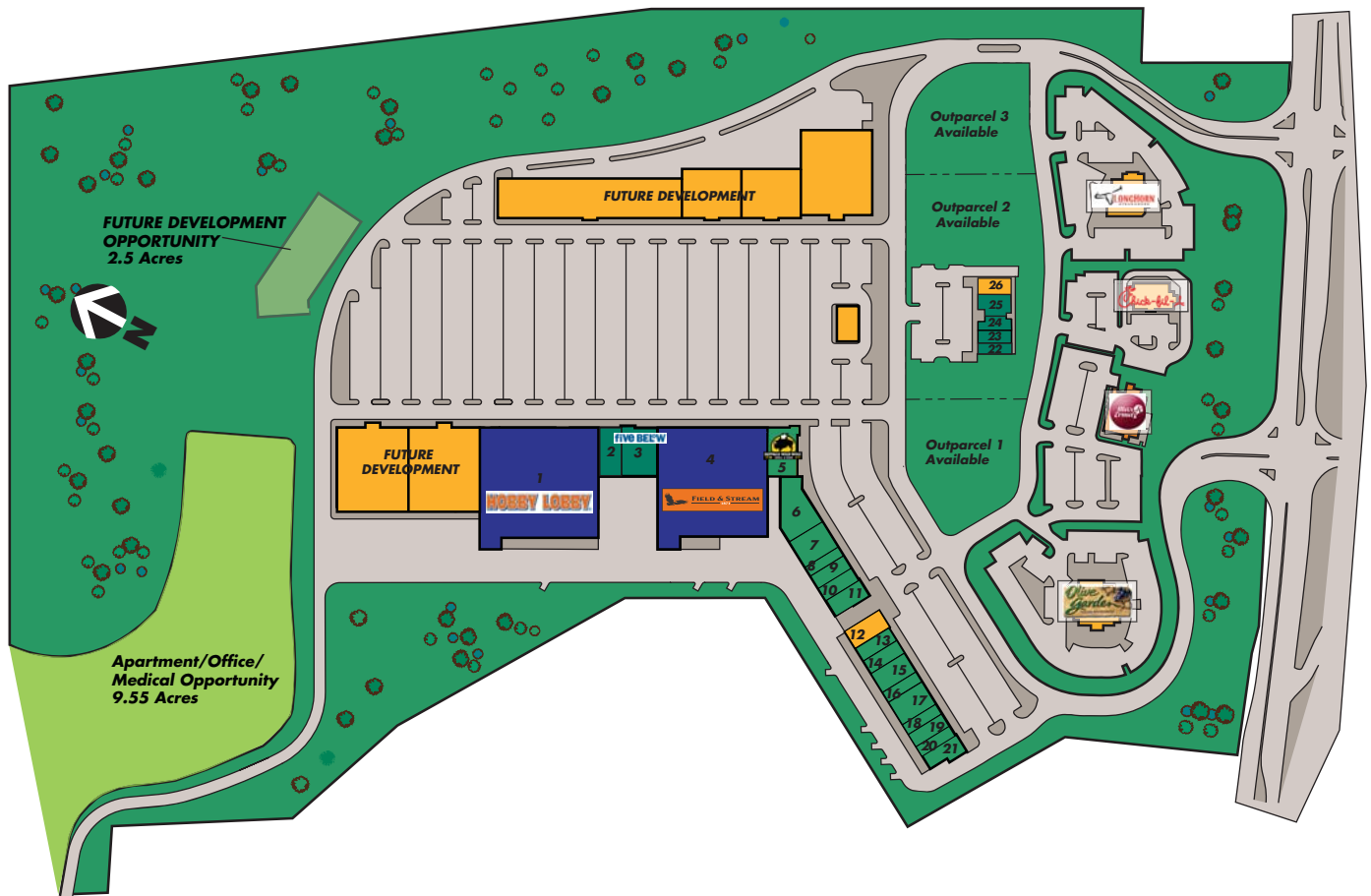
PROPERTY HIGHLIGHTS

- Anchored by the exciting new Field & Stream concept and a 55,000 sq. ft. Hobby Lobby, The Old Mill brings a new destination retail development to one of the fastest growing markets in western Pennsylvania - just 30 minutes south of downtown Pittsburgh.
- Located just south of I-79 on Route 19 adjacent to Strabane Square and Trinity Pointe, which boasts tenants such as Walmart, Target, Kohl's, Sam's Club and Lowe's.
- Outlots available immediately with 53,580 sq. ft. of small shop retail constructed, and an additional 200,000 sq. ft. +/- to follow.

FOR MORE INFORMATION, PLEASE CONTACT:



The Old Mill Shopping Center



DEMOGRAPHICS*

| | 3 MILE | 5 MILES | 10 MILES |
|-----------------------|----------|----------|----------|
| POPULATION | 32,573 | 54,289 | 114,983 |
| HOUSEHOLDS | 14,244 | 23,773 | 48,223 |
| AVG. HOUSEHOLD INCOME | \$74,429 | \$74,089 | \$89,736 |

FOR MORE INFORMATION, PLEASE CONTACT:

SAM ADLER
 DIRECT 314.513.1437
 CELL 314.276.6312
 sadler@tsgproperties.com

NOT TO SCALE. *Source: REGIS, 2017

TSG is not affiliated or associated with, is not endorsed by, does not endorse, and is not sponsored by or a sponsor the tenants or of their products or services pictured or mentioned. The names, logos, and all related product and service names, design marks, and slogans are the trademarks or service of their respective companies. We obtained the information above from sources we believe to be reliable. However, we have not verified its accuracy and make no guarantee, warranty or representation about it. It is submitted subject to the possibility of errors, omissions, change of price, rental or other conditions, prior sale, lease or financing, or withdrawal without notice.

